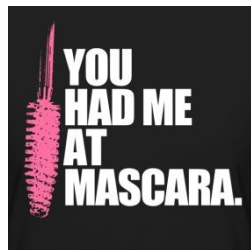




Thanks for your
pre-order of the NEW,
Lash Intensity Mascara!

Here are some tips to help you use this specially-designed wand.

- ♥ If using an eyelash curler, curl lashes before applying mascara to avoid damage to your eyelashes.
- ♥ If using MK's Lash Primer, apply it first to top and bottom lashes. Let it dry for at least one minute.
- ♥ Simply put your thumb over the "Mary Kay" printed on the wand handle.
- ♥ Use the shorter bristles to apply the product in a wiggling motion at the very base of the lashes.
- ♥ Rotate the wand to use the longer bristles to comb the product through the lashes from root to tip.
- ♥ Apply as many coats as you'd like depending on how full and long you want your lashes to be allowing 1—2 minutes between each coat.
- ♥ Remember to replace your mascara every 3—4 months.
- ♥ Remove all eye products every night!



Thanks for your
pre-order of the NEW,
Lash Intensity Mascara!

Here are some tips to help you use this specially-designed wand.

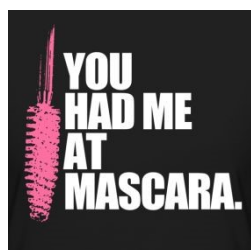
- ♥ If using an eyelash curler, curl lashes before applying mascara to avoid damage to your eyelashes.
- ♥ If using MK's Lash Primer, apply it first to top and bottom lashes. Let it dry for at least one minute.
- ♥ Simply put your thumb over the "Mary Kay" printed on the wand handle.
- ♥ Use the shorter bristles to apply the product in a wiggling motion at the very base of the lashes.
- ♥ Rotate the wand to use the longer bristles to comb the product through the lashes from root to tip.
- ♥ Apply as many coats as you'd like depending on how full and long you want your lashes to be allowing 1—2 minutes between each coat.
- ♥ Remember to replace your mascara every 3—4 months.
- ♥ Remove all eye products every night!



Thanks for your
pre-order of the NEW,
Lash Intensity Mascara!

Here are some tips to help you use this specially-designed wand.

- ♥ If using an eyelash curler, curl lashes before applying mascara to avoid damage to your eyelashes.
- ♥ If using MK's Lash Primer, apply it first to top and bottom lashes. Let it dry for at least one minute.
- ♥ Simply put your thumb over the "Mary Kay" printed on the wand handle.
- ♥ Use the shorter bristles to apply the product in a wiggling motion at the very base of the lashes.
- ♥ Rotate the wand to use the longer bristles to comb the product through the lashes from root to tip.
- ♥ Apply as many coats as you'd like depending on how full and long you want your lashes to be allowing 1—2 minutes between each coat.
- ♥ Remember to replace your mascara every 3—4 months.
- ♥ Remove all eye products every night!



Thanks for your
pre-order of the NEW,
Lash Intensity Mascara!

Here are some tips to help you use this specially-designed wand.

- ♥ If using an eyelash curler, curl lashes before applying mascara to avoid damage to your eyelashes.
- ♥ If using MK's Lash Primer, apply it first to top and bottom lashes. Let it dry for at least one minute.
- ♥ Simply put your thumb over the "Mary Kay" printed on the wand handle.
- ♥ Use the shorter bristles to apply the product in a wiggling motion at the very base of the lashes.
- ♥ Rotate the wand to use the longer bristles to comb the product through the lashes from root to tip.
- ♥ Apply as many coats as you'd like depending on how full and long you want your lashes to be allowing 1—2 minutes between each coat.
- ♥ Remember to replace your mascara every 3—4 months.
- ♥ Remove all eye products every night!

